

MV-3 Series
Miniature Basic Switch
◆ Features

- ✓ Standard miniature, and durable, switch for mass application
- ✓ High temperature enclosure material is rated for V-0 fire resist
- ✓ Forms C, A, and B contact variations available

◆ Recognition(s)

- ✓ CE – EN61058-1
- ✓ UL – UL-508
- ✓ CCC – GB14048.5-2008
- ✓ CSA – 6241 90
- ✓ RoHS Compliant
- ✓ Reach Unaffected


◆ Characteristics

Positive Opening	Electrical Contact	Terminal Type	Contact Form(s)	Poles & Throws	Actuation Sequence(s)
No	2 or 3 Points	Quick connect (#187)	Form(s) C, A or B	SPDT, or SPST-NO, or SPST-NC	Break(1) Make(2) or single make or single break

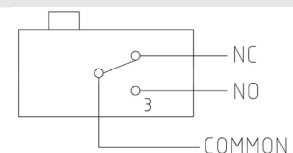
Operating Temp.	AC Rated	DC Rated	IP	Oil Resist	Dust Resist	Water Resist	Operating Speed
-25 to 80 Celsius, -25 to 120 Celsius	5A 125V-250V, 15A 125V-250V	0.5A 125V	40	No	No	No	0.01mm to 1m/sec

Operation Frequency	Contact Resistance	Insulation Resistance	Vibration
Mechanically: 600/min Electrically: 60/min	15mΩ max. (initial)	100MΩ min. (500VDC)	1.5mm amplitude at 10-55Hz

Storage Humidity	Service Life (min.)	Dielectric Strength
85% RH max	Mechanically: 5,000,000 operations Electrically: 500,000 operations	1000VAC, 50/60Hz for 1 minute between non-continuous terminals

Recommended tightening forces

Purpose	Screw type	Tightening
Mounting	M3	0.39~0.59N·m

Circuitry


◆ Materials

Actuation touch part	Electrical contact point	Enclosure
Stainless Steel, or Phenolic, or POM thermoplastic, or Nickel-plated brass	Silver-Nickel Alloy	PC plastic with ABS

◆ Nomenclature

Series:	Actuator (and material):	Operating Force:	Amp code:	Contact Form:
MV –	3003	A		– NO

3000 = Phenolic Plunger 3001 = Metallic Lever, simulated roller 3002 = Metallic Lever, straight 3003 = Metallic Lever, straight long 3003L = Metallic Lever, straight long 55.5mm 3004 = Lever, nickel-plated brass roller 3005 = Lever, nickel-plated brass roller, long	A=Standard	Blank=5 Amps 20= 15 Amps	Blank=Form C NO=Form A NC=Form B
---	------------	------------------------------------	--

V-0 fire resist (120C temp.)

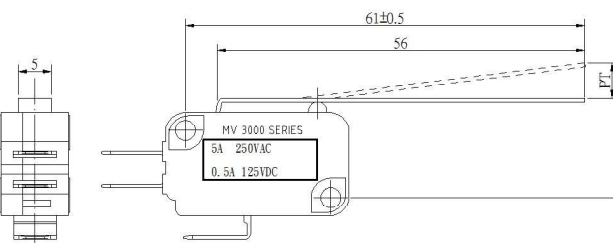
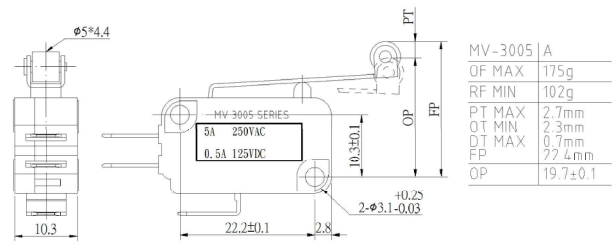
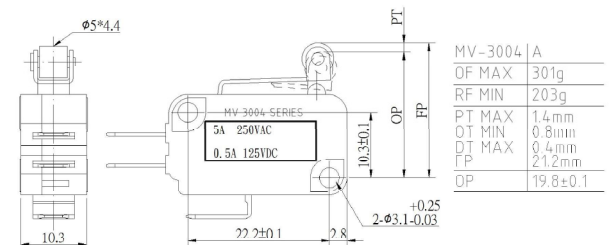
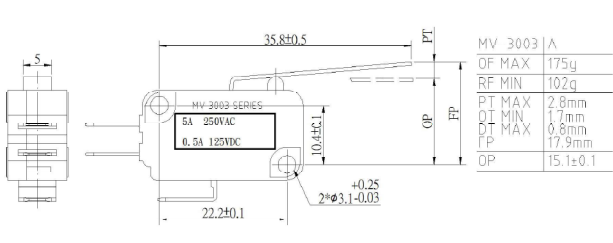
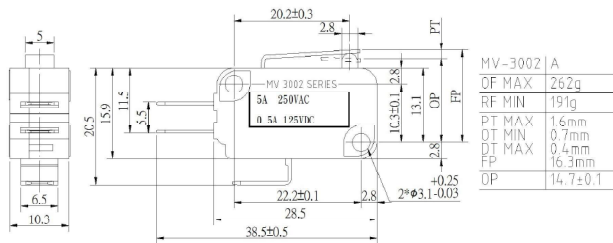
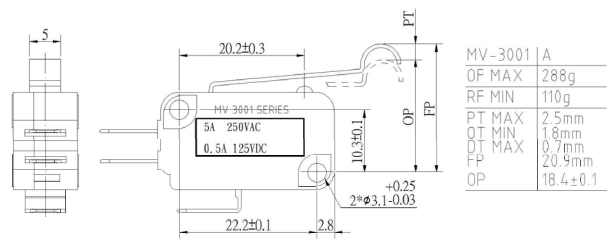
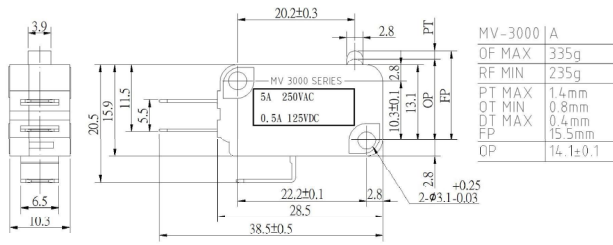
3100 = Phenolic Plunger
 3101 = Metallic Lever, simulated roller
 3102 = Metallic Lever, straight
 3103 = Metallic Lever, straight long
 3104 = Lever, nickel-plated brass roller
 3105 = Lever, nickel-plated brass roller, long

CUSTOM

MV-3004A-P = Lever, POM roller
 MV-3005A-P = Lever, POM roller, long

◆ Dimensions & Operating Characteristics

*Measurements in millimeters



MV-3003AL



MV-3000A



MV-3001A



MV-3002A



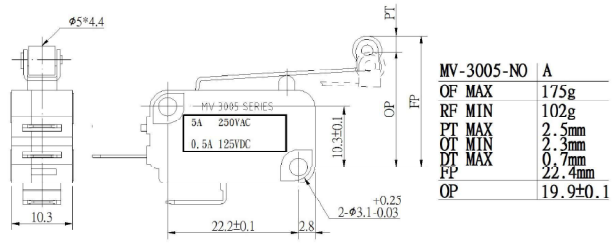
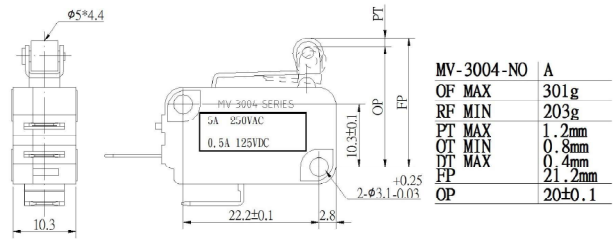
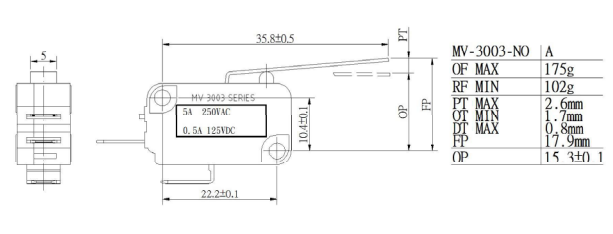
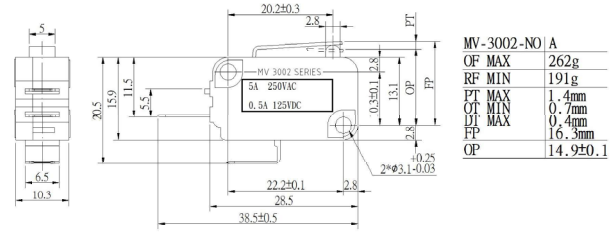
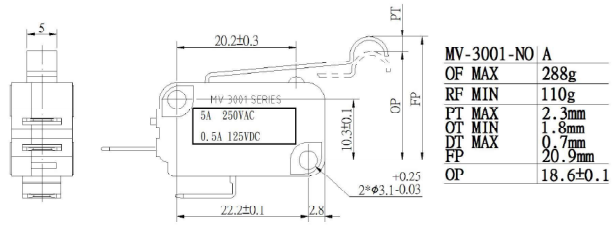
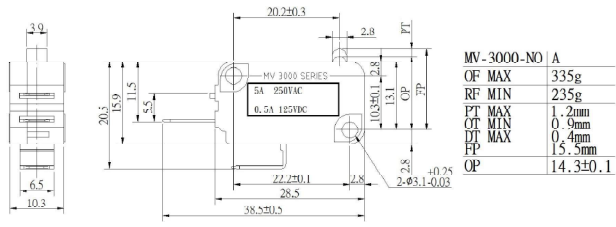
MV-3003A



MV-3004A

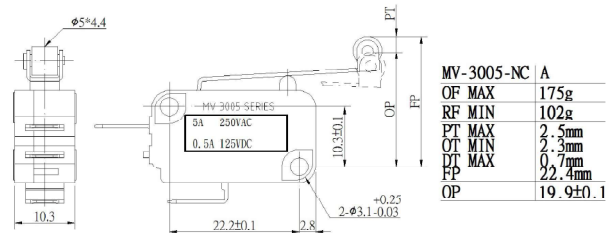
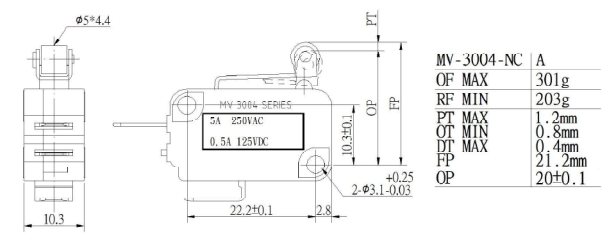
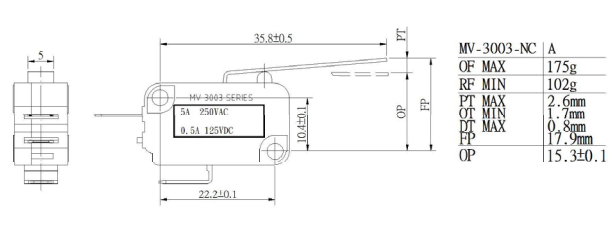
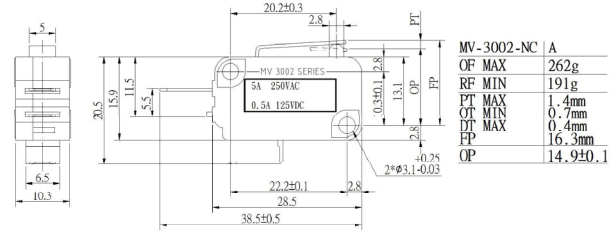
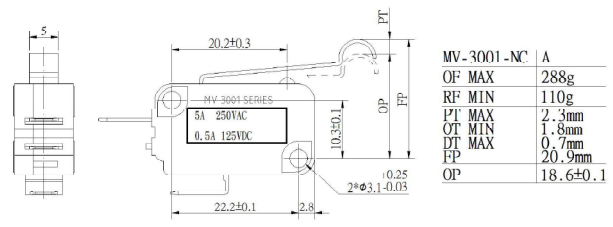
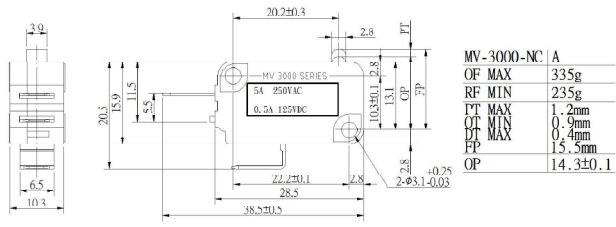


MV-3005A

MV-3


MV-3000A-NO MV-3001A-NO MV-3002A-NO MV-3003A-NO MV-3004A-NO MV-3005A-NO

MV-3



MV-3000A-NC

MV-3001A-NC

MV-3002A-NC

MV-3003A-NC

MV-3004A-NC

MV-3005A-NC