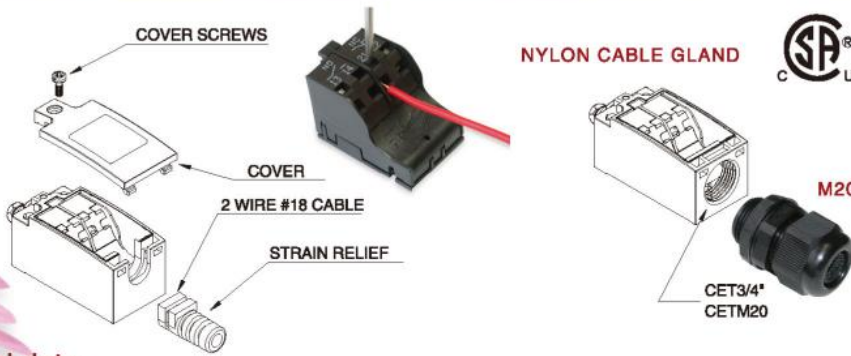


► M8 SERIES Positive Opening Limit Switches 強制脫離 行程開關



Technical data

General	
Standards	IEC/EN 60947
Climatic proofing	Damp heat, constant., to IEC 60068-2-78 Damp heat, cyclic, to IEC 60068-2-30
Ambient temperature	°C -25/+70
Mounting position	As required
Degree of protection	IP66, IP65 for "T" Type with rubber strain
Contacts/switching capacity	
Rated impulse withstand	Uimp VAC 4000
Voltage	
Rated insulation voltage	Ui V 400
Overvoltage category/pollution degree	III/3
Rated operational current	
AC-15	24V Ie A 6 230V/240V Ie A 6 400V/415V Ie A 4
DC-13	24V Ie A 10 110V Ie A 1 220V Ie A 0.5
Control circuit reliability	
at 24 V DC/5 mA H _F	Fault probability <10 ⁻⁷ , <1 failure at 10 ⁷ operations
at 5 V DC/1 mA H _F	Fault probability <10 ⁻⁴ , <1 failure at 5x10 ⁶ operations
Supply frequency	Hz max.400
Short-circuit rating in the closed state (IEC/EN 60947-5-1)	
Fuseless	Type PKZM0-10 FAZ-B6/1
Max.fuse	A gG/gL 10
Short-circuit rating to IEC/EN 60947-5-1	
Max.fuse	A gG/gL 6
Repetition accuracy	mm ±0.02

Mechanical variables	
Lifespan	
Standard-action contact	Operations x10 ⁶ 8
Snap-action contact	Operations x10 ⁶ 8
Contact temperature of roller head	°C ≤100
Mechanical shock resistance (half-sinusoidal shock, 20 ms)	
Standard-action contact	g 25
Snap-action contact	g 2
Basic unit	g -
Operating frequency	Operations/h ≤6000
Actuation	
Mechanical	
Actuating force at beginning/end of stroke	
Basic units	8601 N 1.0/8.0
	8611 N 1.0/8.0
	8602 N 1.0/8.0
	8603 N 1.0/8.0
Actuating torque of rotary drives	
	Nm 0.2
Max.operating speed with DIN cam	
Basic units for angle of actuation 8601	a=0° /30° m/s 1/0.5
8604 for angle of actuation	a=0° m/s 1.5
8608 for angle of actuation	a=30° L=125mm m/s 1.5
8607 for angle of actuation	L=130mm m/s 1.5
8602 for angle of actuation	a=30° /45° m/s 1
8603 for angle of actuation	a=30° /45° m/s 1
8611 for angle of actuation	a= 0° /30° m/s 1/1

M8 - 8601 Type number
A Contact Category (A,B,C,D,E)
T With rubber strain relief

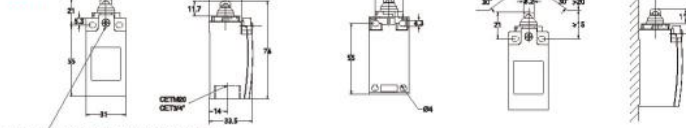


Type No:M8 Series IP66 (With tail)	8601A 8601B 8601C 8601D 8601E	8611A 8611E	8606E	8602A
	8601AT 8601BT 8601CT 8601DT 8601ET	8611AT 8611ET	8606ET	8602AT
Contacts M=Make B=Break ⊕=Positive opening safety function to IEC/EN 60947-5-1	1M 1M 2M - 1M 1B⊕ 1B⊕ - 2B⊕ 1B⊕	1M 1M 1B⊕ 1B⊕	1M 1B⊕	1M 1B⊕
Circuit - Symbol Contact Sequence ■=Contact closed □=Contact open ZW=Positive opening Sequence				

Dimension

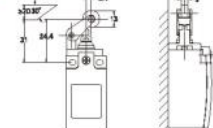
M8 series position switches

8601

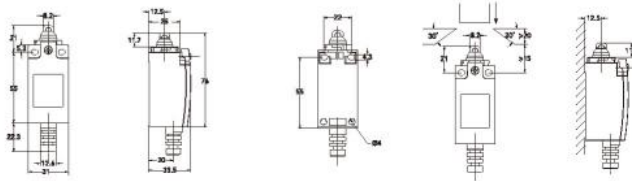


cover screw tightening torque: 1.0Nm±0.2Nm

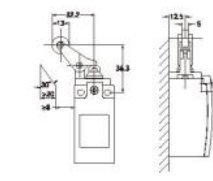
8602



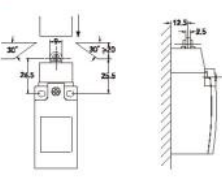
8601-T



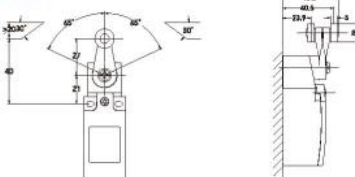
8603



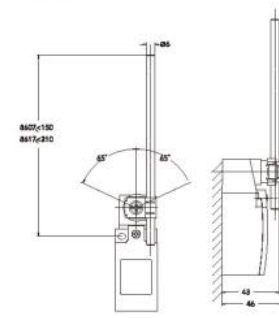
8611



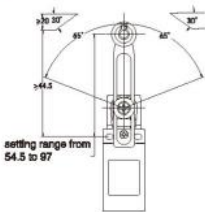
8604



8607
8617

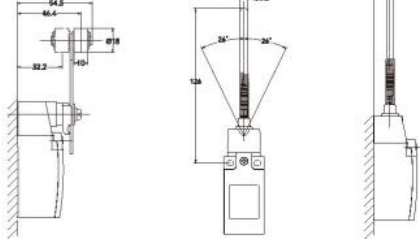


8608



setting range from 54.5 to 97

8606



8602B	8602D	8602E	8603A	8603B	8603D	8603E	8604A	8604E	8608A	8608E	8607E
8602BT	8602DT	8602ET	8603AT	8603BT	8603DT	8603ET	8604AT	8604ET	8608AT	8608ET	8617E
											8617E
											8607ET
											8617ET
1M	-	1M	1M	1M	-	1M	1M	1M	1M	1M	1M
1B⊕	2B⊕	1B⊕	1B⊕	1B⊕	2B⊕	1B⊕	1B⊕	1B⊕	1B⊕	1B⊕	1B⊕
Zw=7.1mm		Zw=6.7mm	Zw=6.9mm	Zw=6.9mm	Zw=6.9mm	Zw=6.9mm	Zw=4.7	Zw=4.7	Zw=4.7	Zw=4.7	Zw=6.7